



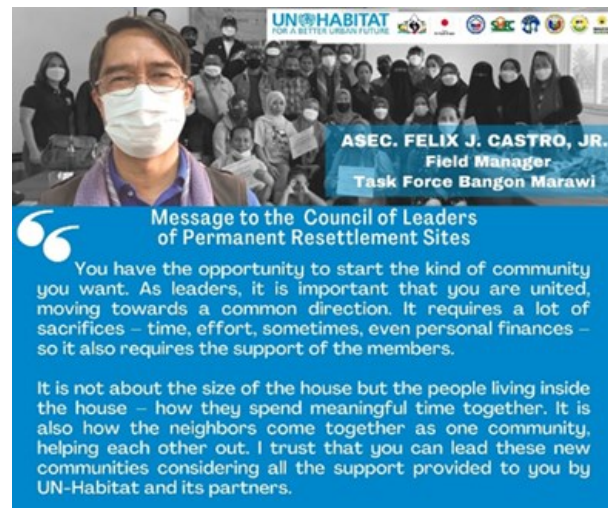
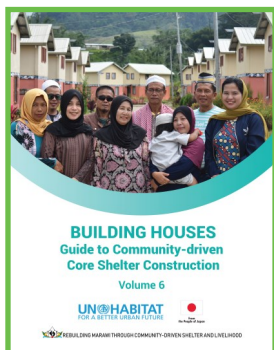
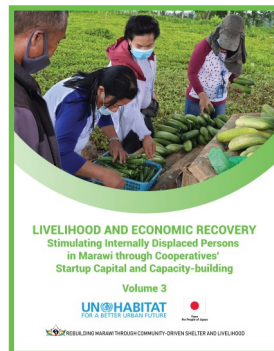
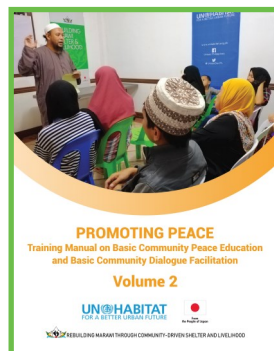
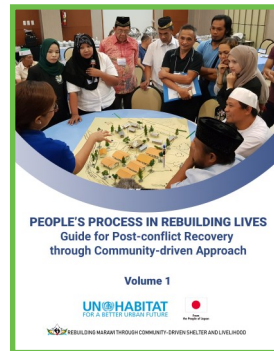
Environmental and Social Safeguards (ESS)

- Site suitability and participatory environmental impact assessments and risk mapping conducted
- 30 ESS focal persons of HOAs capacitated
- Promotion of proper solid waste management, greening of resettlement sites through tree-planting and gardening, installation of bio-net for prevention of soil erosion, estate management and risk reduction management



6-Volume Knowledge products

- as reference for replication and upscaling



Rocma Imam Dumamba, 63
Homepartner, Darrusalam Village, Brgy. Dulay Proper

What was of primary importance at that time, as gunshots were exchanged, was to get out of Marawi alive.

Even if our house and the stuff we left behind were burnt to the ground, I am very grateful that we now have a house we can call our own."

Rebuilding Marawi through Community-driven Shelter and Livelihood

Project Area: Islamic City of Marawi, Province of Lanao del Sur, Mindanao, Philippines

Project Background: The project assisted families displaced by the Marawi armed conflict in 2017 through post-conflict recovery of shelter and community infrastructure, livelihood support peace-promotive capacity development.

This project was implemented using the "People's Process", demonstrating a community-driven rebuilding approach which trained and empowered prioritized families whose homes have been completely destroyed and with no chances of returning to their former location.



CORE SHELTER

1,000 permanent houses built in five (5) resettlement sites



LIVELIHOOD

Skills training, agribusiness and enterprise development, employment generation, and other livelihood programs extended to 4,000 families



COMMUNITY DEVELOPMENT

Families are organized into home-owners associations and capacitated on project and financial management, estate management, and more



PEACE STRUCTURES

Partner communities capacitated to prevent violence and transform conflicts using peacebuilding mechanisms



MAPPING

Tenure rights of communities mapped using geographical information systems (GIS) applications



COMMUNITY INFRASTRUCTURES

Small-scale infrastructures constructed in open spaces

How we rebuilt more than just houses in Marawi


STRATEGY Community-Driven Shelter and Livelihood Project utilizes the People's Process as a platform to create spaces for collaboration and to establish grassroots institutions that promote participatory planning and decision-making.

PROJECT OUTCOMES

 **1,000 families received and are now residing in permanent homes in five (5) resettlement areas**


- Participatory resettlement planning
- Culturally-sensitive house designs



 **1,488 direct and 6,892 indirect beneficiaries of the livelihood program**

- 33 cooperatives formed and provided with total of Php 30M startup capital
- 110 homepartners and individuals capacitated with vocational skills for employment
- 82 kinds of livelihood operated
- Capacity-building on livelihood and enterprise management provided




 **60 Advocates, 30 Mediators, and 30 Educators for Peace organized** among HOA members who are now involved in settling issues in resettlement sites

- 1,120 individuals capacitated through 30 Peace and Development trainings and orientations
- Peace and Development training and orientations on peace education, dialogue, and facilitations

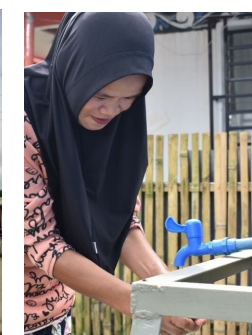
 **4,530 families or 10,738 individuals benefiting from community development support**

- 120 HOA committees formed
- 945 trainings on Project, Construction, and Financial Management, Livelihood, Peace and Development, Knowledge Management and Communications, and Environmental and Social Safeguards conducted



 **UN-Habitat employed the Social Tenure Domain Model (STDM) platform in developing the project database starting with participatory community mapping, validation, and re-validation**

- Profile of 1,057 IDPs stored in database, digitally linking their original location in the Most Affected Areas of Marawi City to their new location in the resettlement sites
- Aided in establishing tenurial relationship of IDPs



 **Community Infrastructures in open spaces**

- Constructed small-scale projects like solar lights, multi-purpose hall, guard post, and rainwater catchment provided in resettlement sites